

INDEX MONOGRAPHIC	NAME
T54	TRIFLOXISTROBINE

T54 - Trifloxystrobin

a) Active ingredient or name comum: TRIFLOXISTROBINE (trifloxystrobin)

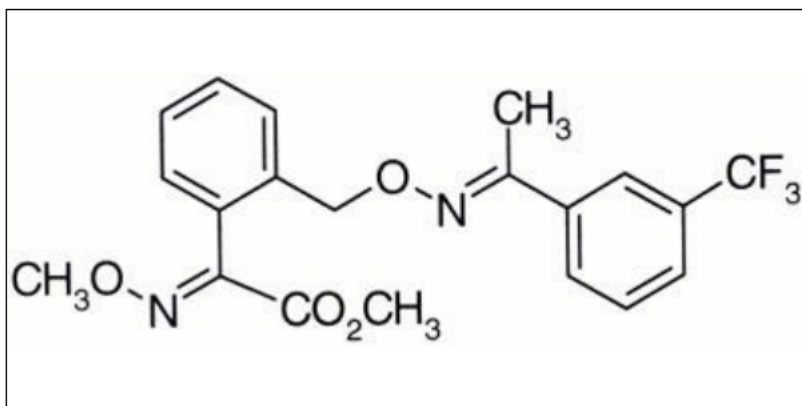
b) Synonymia: CGA 279 202; Trifloxistrobin

c) CAS No.: 141517-21 -7

d) Name chemico: methyl (E)-methoxyimino - {(E) -α - [1 - (α, α, α-trifluoro-m- tolyl) ethylideneaminoxy] -o-toly} acetate

e) Formgross price: $C_{19}H_{19}F_3N_2O_4$

f) Formstructural area:



g) Chemical groupico: Strobilurin

h) Class: FungicidThe

i) Toxic classificationlogic: Class II

j) Agricultural use: authorized conforme indicated:

Type of employment: aplished here leaf in culturThe pineapple, abpumpkin, zucchini, chard, acerola, lettuce, cotton, garlic, lmeirão, ameisha, ampeanut, rice, birdwould, banana, potato, berinjala, beet, broccoli, coffee, çon here, cane of -Sugar, onion, carrot, barley, chicory, chayote, citrus, cabbage, brussel sprouts of -bruxthey, Chinese cabbage, cauliflower, eucalyptus, beans, sunflower, guava, yamsand jil Apple, mthe hand, mandioca, mandioquina-parsley, manga, maracujThe, gherkin, melancia, mshe, meyelet, strawberry mostarda, turnip, nectarine, nwait, cucumber, pear, peach, chili rpineapple, randsauce, buttercup, soy, tomtie wheat and grape.

Groove applicationand planting in the crop cane- from -açucar.

Cultures	Modality of Employment (Applicat	MRL (mg / kg)	Security Intervalhere
Pineapple	Foliar	0, 3	1 day
Pumpkin ¹	Foliar	0.2	1 day

Zucchini ¹	Foliar	0.2	1 day
Chard ¹	Foliar	2.0	1 day
Acerola ¹	Foliar	0.3	1 day
Lettuce	Foliar	2.0	1 day
Cotton	Foliar	0.05	21 days
Garlic	Foliar	0.05	14 days
Almeirão ¹	Foliar	2.0	1 day
Plum ¹	Foliar	0.5	1 day
Peanut	Foliar	0.05	15 days
Rice	Foliar	0.2	15 days
Oats	Foliar	0.05	30 days
Banana	Foliar	0.05	1 day
Potato	Foliar	0.02	30 days
Eggplant ¹	Foliar	0.1	1 day
Beet	Foliar	0.1	1 day
Broccoli ¹	Foliar	0.7	1 day
Coffee	Foliar	0.05	30 days
Cane of -Sugar	Foliar	0.05	90 days
Cane of -Sugar	Planting furrow	0.05	90 days
Persimmon	Foliar	0.2	20 days
Onion	Foliar	0.02	14 days
Carrot	Foliar	0.05	14 days
Barley	Foliar	0.5	30 days
Chicory ¹	Foliar	2.0	1 day
Chuchu ¹	Foliar	0.2	1 day
Citrus	Foliar	0.2	14 days
Kale ¹	Foliar	0.7	1 day
Brussel sprouts of -br	Foliar	0.7	1 day
Eucalyptus	Foliar		UNA
Bean	Foliar	0.2	15 days
Sunflower	Foliar	3.0	30 days
Guava	Foliar	0.05	20 days
Yam ¹	Foliar	0.1	1 day
Jiló ¹	Foliar	0.1	1 day

Apple	Foliar	0.05	7 days
Papaya	Foliar	0.05	7 days
Cassava ¹	Foliar	0.1	1 day
Mandioquinha-salsa ¹	Foliar	0.1	1 day
Mango	Foliar	0.05	20 days
Passion fruit	Foliar	0.05	7 days
Maxixe ¹	Foliar	0.2	1 day
Watermelon	Foliar	0.05	14 days
Melon	Foliar	0.5	14 days
Corn	Foliar	0.05	15 days
Strawberry	Foliar	0.3	1 day
Mustard ¹	Foliar	2.0	1 day
Turnip ¹	Foliar	0.1	1 day
Nectarine ¹	Foliar	0.5	1 day
Loquat ¹	Foliar	0.5	1 day
Cucumber	Foliar	0.2	1 day
Wait ¹	Foliar	0.5	1 day
Peach	Foliar	0.5	1 day
Bell pepper	Foliar	0.1	1 day
Radish ¹	Foliar	0.1	1 day
Cabbage	Foliar	0.7	1 day
Seriguela ¹	Foliar	0.3	1 day
Soy	Foliar	0.03	30 days
Tomato	Foliar	0.5	7 days
Wheat	Foliar	0.05	30 days
Grape	Foliar	0.3	10 days

Note : MRLs refer to the triethoxyacetophenone and its acid metabolite (E, E)-methoxyimino-2-[1-(3-trifluoromethylphenyl)-ethylideneamino]ethoxyacetic acid (CGA 321113).

UNA = Use No To feed

k) Daily Ac Intake Eatable (IDA) = 0.03 mg / kg pc

Resolution RE No. 4313 of 29/09/09 (DOU 01 /10/09); rectified in Section 1 of DOU n° 209, of 10/28/13.

Resolution RE No. 4049 of 06/09/11 (DOU 08 /09/11)

Resolution No. 2,500 of 06/14/12 (DOU of 06/15/12)

Resolution No. 3,174 of 8/20/14 (DOU of 8/21/14)

RE Resolution No. 4,707 of 12/05/14 (DOU of 12/08/14)

Resolution No. 663 of 03/11/16 (DOU of 03/14/16)

Resolution No. 1751 of 06/30/16 (DOU of 07/04/16)

Resolution RE No. 2672 of 06 / 10 /17 (DOU 09 / 10 /17)